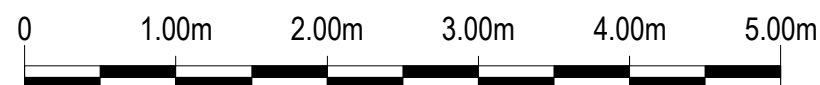
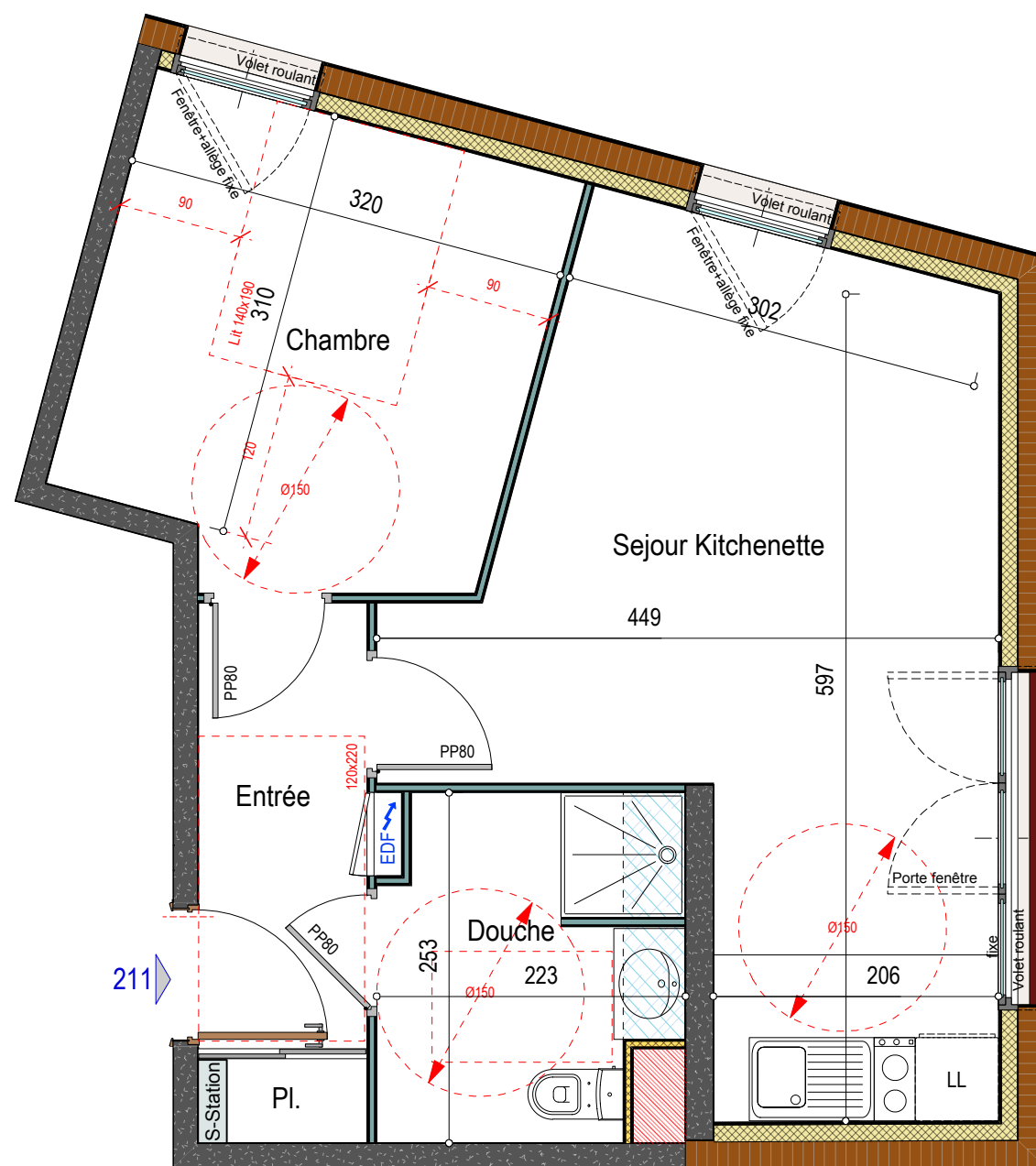
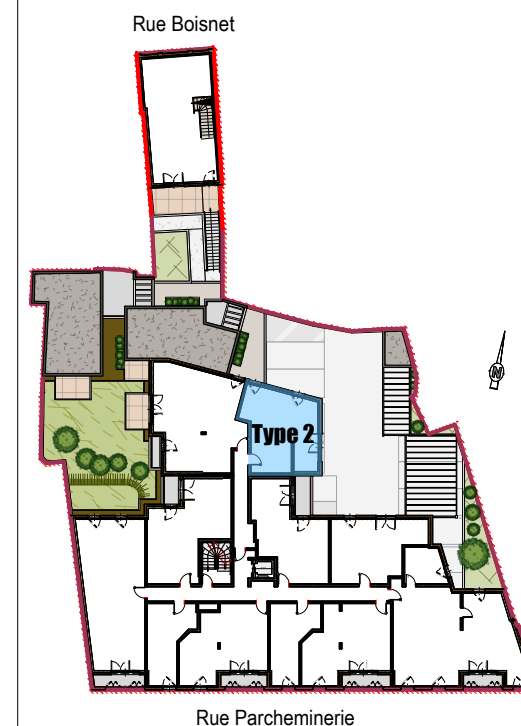




Cour Molière

Angers

PLAN DE REPERAGE SUR ETAGE 2



MUR BRIQUE	MUR BETON	DOUBLAGE ISOLANT	CLOISON DEMONTABLE
GAINES OU COFFRES TECHNIQUES	TABLEAU ELECTRIQUE	STATION DE CHAUFFAGE	PLAFOND SURBAISSE

Bâtiment	Niveau	Type	N°
Collectif	R+2	2	A 211

PIECES	SURFACES
Entrée+Pi.	4.75 m ²
Sejour Kitchenette	19.72 m ²
Chambre	10.38 m ²
Bains	5.20 m ²

TOTAL	40.05m ²
-------	---------------------